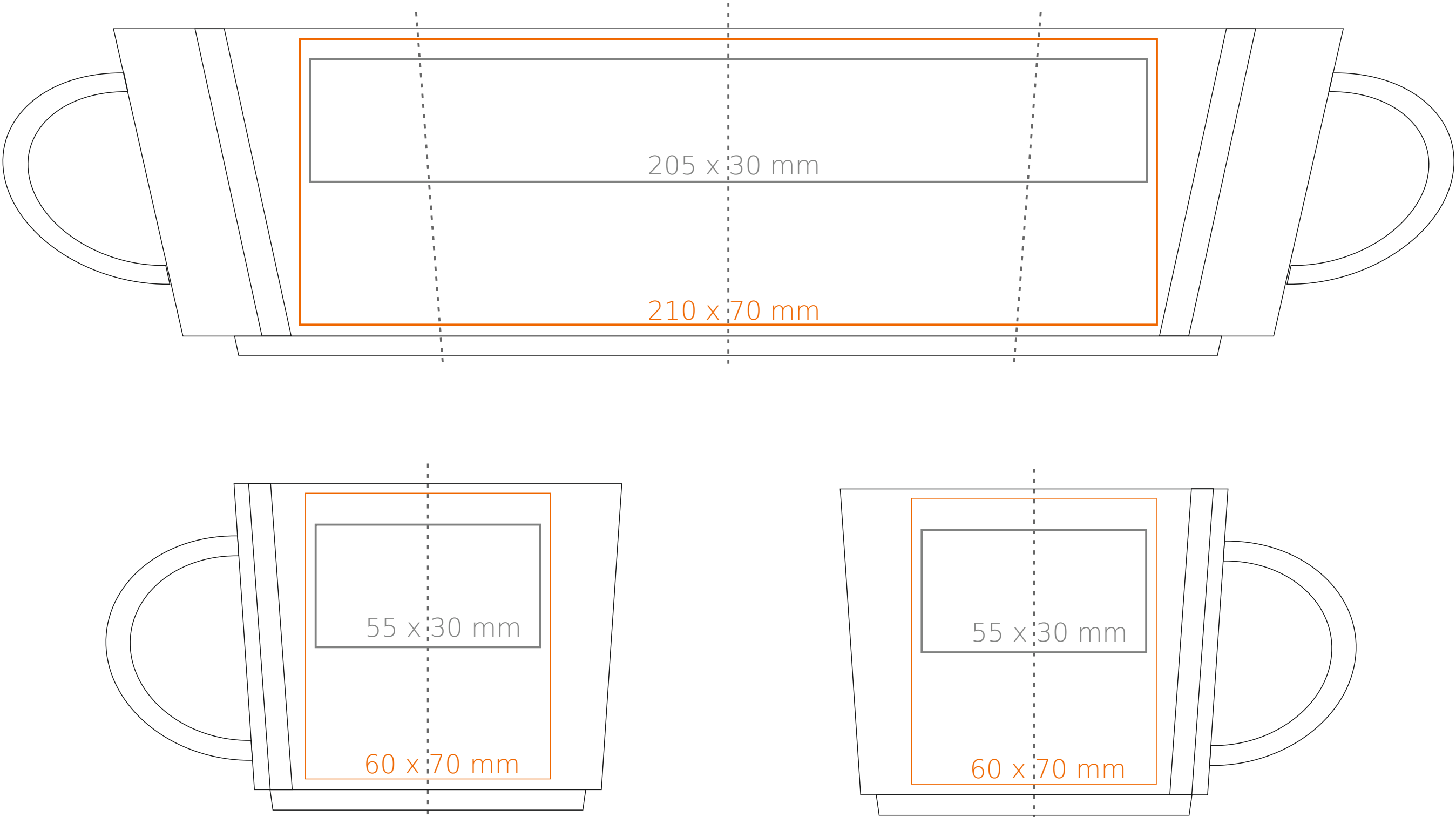


M/453 **Lucas**

350 ml / h: 80 mm / Ø 95 mm



- Imprint on the handle

Imprint on the inside

Imprint on the bottom inside

Imprint on the bottom outside
- 50 x 10 mm

- 40 x 20 mm

- Ø 30 mm

- Ø 45 mm

*In the case of projects for transfer print running outside of the standard print area, please contact our sales department.

[How to prepare print material](#)

meaning

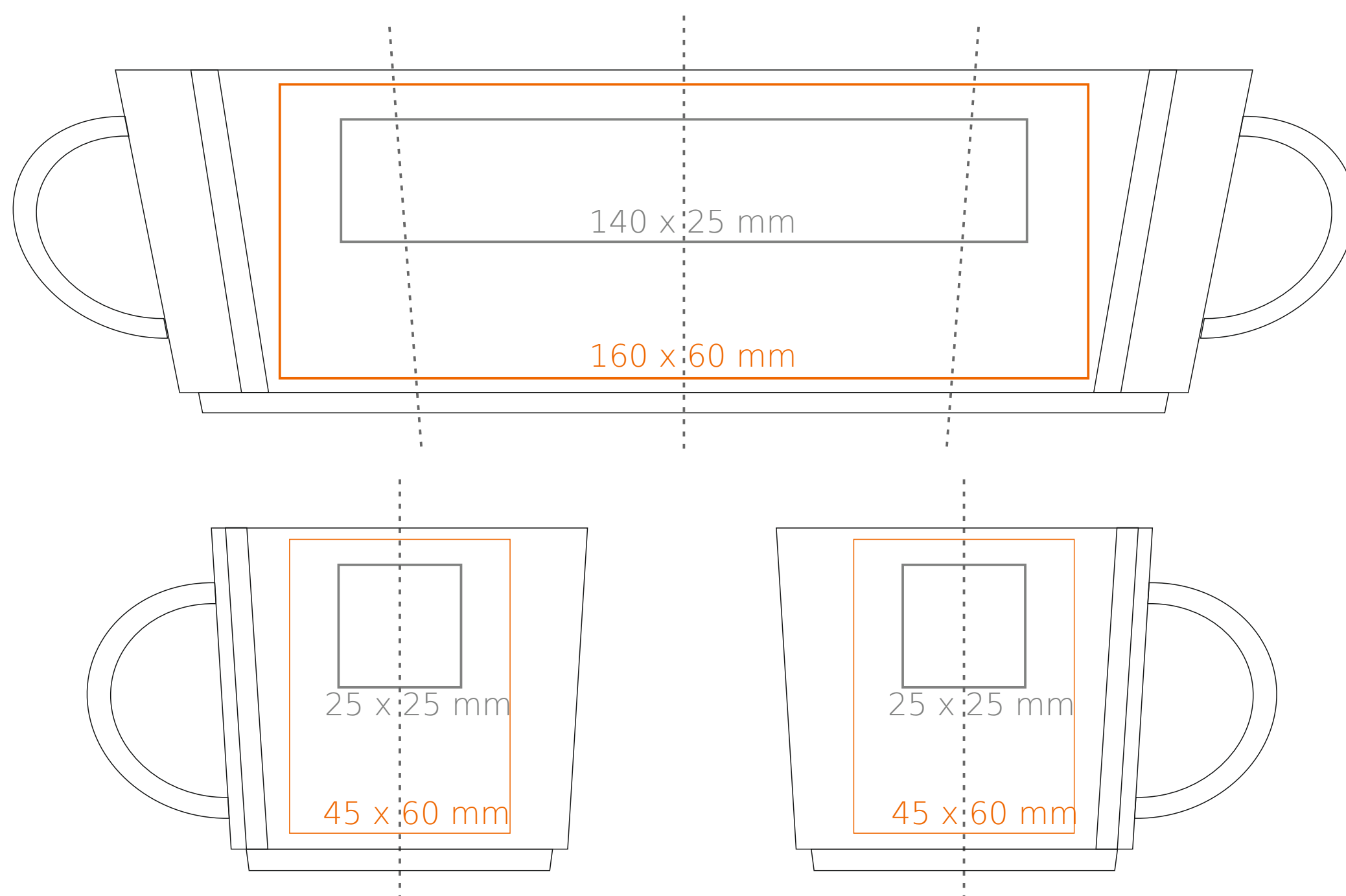
Transfer Print

Sensitive Touch

Direct Print

M/453 Lucas

200 ml / h: 70 mm / Ø 77 mm



- | | |
|-------------------------------|--------------|
| Imprint on the handle | - 50 x 10 mm |
| Imprint on the inside | - 40 x 20 mm |
| Imprint on the bottom inside | - Ø 30 mm |
| Imprint on the bottom outside | - Ø 35 mm |

*In the case of projects for transfer print running outside of the standard print area, please contact our sales department.

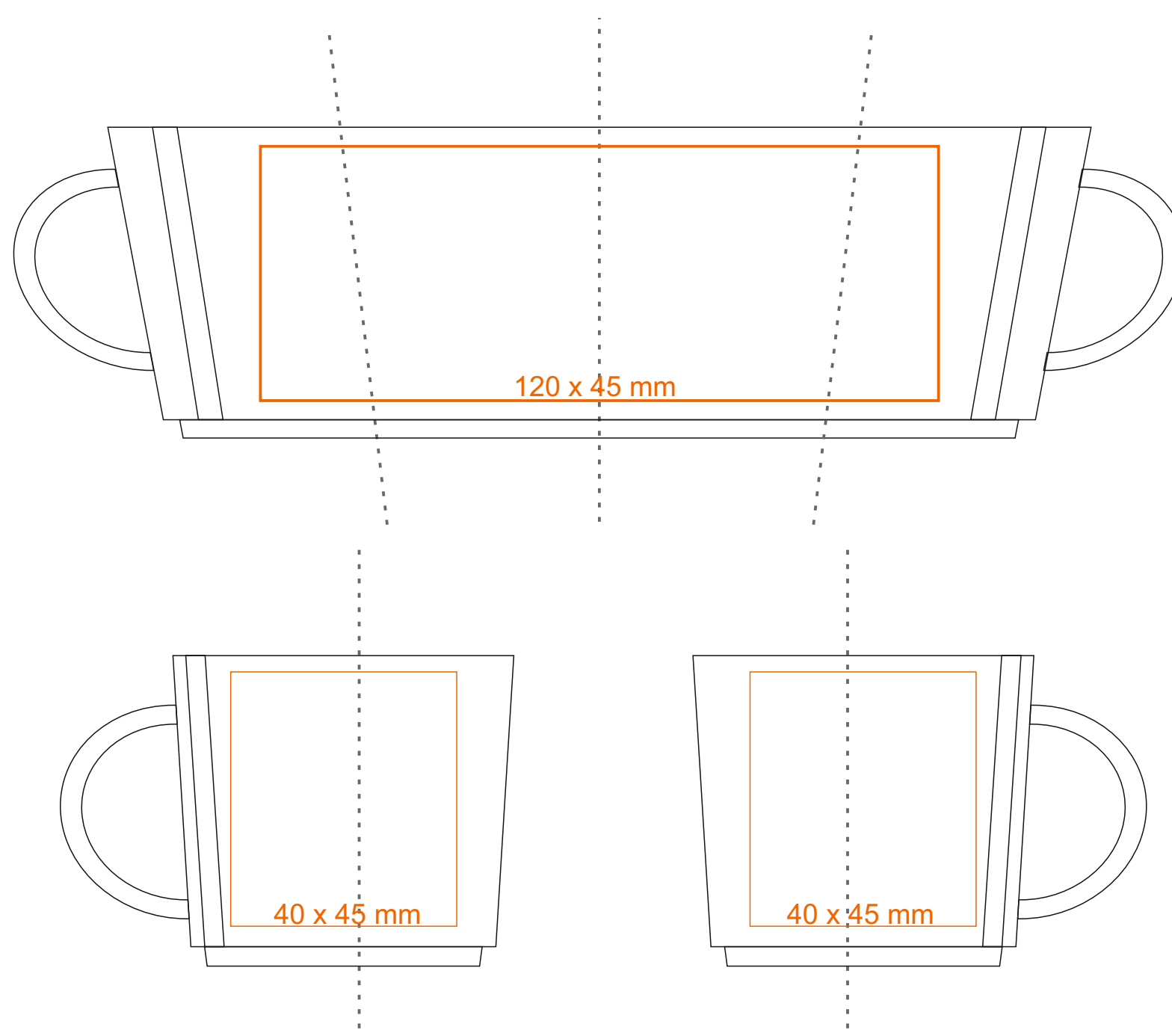
[How to prepare print material](#)

meaning

- Transfer Print
- Sensitive Touch
- Direct Print

M/453 Lucas

75 ml / h: 55 mm / Ø 60 mm



- | | |
|-------------------------------|--------------|
| Imprint on the handle | - 50 x 5 mm |
| Imprint on the inside | - 25 x 20 mm |
| Imprint on the bottom inside | - Ø 25 mm |
| Imprint on the bottom outside | - Ø 20 mm |

*In the case of projects for transfer print running outside of the standard print area, please contact our sales department.

[How to prepare print material](#)

meaning

- Transfer Print
- Sensitive Touch
- Direct Print